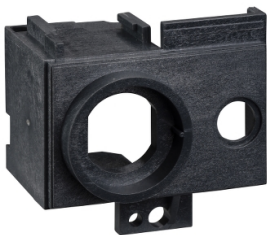


Product datasheet

Specifications



Circuit breaker locking, MasterPact NT fixed/drawout, Castell adaptation kit without keylock, spare part

47518

Main

Product Or Component Type	Adaptation kit
Accessory / Separate Part Category	Keylock accessory
Range Compatibility	ComPact ComPact NS630b...1600 Masterpact MasterPact NT Masterpact MasterPact NT UL 489
Mounting Mode	Fixed Drawout

Complementary

Keylock Destination	Circuit breaker
Type Of Keylock	Castell
Key Locking Position	Off
Locking Options Description	Without keylocks
Accessory / Separate Part Category	Spare part for MasterPact NT Spare part for ComPact NS630b...1600

Packing Units

Unit Type Of Package 1	PCE
Number Of Units In Package 1	1
Package 1 Height	4.0 cm
Package 1 Width	8.0 cm
Package 1 Length	11.0 cm
Package 1 Weight	203.0 g
Unit Type Of Package 2	S03
Number Of Units In Package 2	30
Package 2 Height	30.0 cm
Package 2 Width	30.0 cm
Package 2 Length	40.0 cm
Package 2 Weight	6.577 kg

Contractual warranty

Warranty	18 months
----------	-----------

Disclaimer: This documentation is not intended as a substitute for and is not to be used for determining suitability or reliability of these products for specific user applications

Sustainability

Green Premium™ label is Schneider Electric's commitment to delivering products with best-in-class environmental performance. Green Premium promises compliance with the latest regulations, transparency on environmental impacts, as well as circular and low-CO₂ products.

Guide to assessing product sustainability is a white paper that clarifies global eco-label standards and how to interpret environmental declarations.

[Learn more about Green Premium >](#)

[Guide to assess a product's sustainability >](#)

Well-being performance

 Mercury Free	
 Rohs Exemption Information	Yes
Reach Regulation	REACH Declaration
Eu Rohs Directive	Pro-active compliance (Product out of EU RoHS legal scope)
China Rohs Regulation	China RoHS declaration Product out of China RoHS scope. Substance declaration for your information